

Sailing World Cup 2016

NOTICE OF RACE & SAILING INSTRUCTIONS (NoR/SI)

To be supplemented by Round Sailing Instructions for each Round

Issued by World Sailing on 12 Oct 2015

Version 22 Nov 2016

1 ROUNDS and VENUES

Round Dates	Venue Racing Area	Organizing Authority (OA): World Sailing In conjunction with:
SWC Melbourne 7 to 13 December 2015	St Kilda Port Philip	Yachting Australia & Yachting Victoria
SWC Miami 23 to 30 January 2016	US Sailing Centre Biscayne Bay	US Sailing
SWC Hyères 25 April to 1 May 2016	Port de Hyères Rade de Hyères	Fédération Française de Voile
SWC Weymouth & Portland 6 to 12 June 2016	W&P Sailing Academy Portland Harbour and Weymouth Bay	Royal Yachting Association
SWC Qingdao 19 to 25 September 2016	Olympic Sailing Centre Fushan Bay	Chinese Yachting Association
SWC Final - Melbourne 4 to 11 December	St Kilda Port Philip	Australian Sailing & Yachting Victoria

2 RULES

*Documents governing the 2016 Sailing World Cup will be available at World Sailing Website
www.sailing.org/world_cup_documents.php*

- 2.1 The regatta will be governed by the rules as defined in The 2013-2016 Racing Rules of Sailing (RRS). Other documents under RRS Definition: Rule (g) include:

2.1.1 [DP] [SP] The SWC Equipment Regulations (ER).

2.1.2 [DP] The SWC Support Team Regulations (including Coach Boats) (SPR).

2.1.3 [NP] [DP] The SWC Athletes Media Requirements (AMR).

2.1.4 The 2016 SWC Qualification System (SWCQS).

2.1.5 RRS Appendix P, Special Procedures for Rule 42.

2.1.6 For Medal Races, World Sailing Addendum Q, Umpired Fleet Racing, available on the World Sailing website (<http://www.sailing.org>), will apply and changes a number of racing

rules. A link to the version that is current when the regatta begins will appear in the Round Sailing Instructions (RSI).

- 2.2 The National Authority Prescriptions that will apply are stated in full in Addendum A of the NoR/SI.
- 2.3 Decisions of the International Jury will be final as provided in RRS 70.5.
- 2.4 A boat shall neither make radio transmissions while racing nor receive radio communications not available to all boats, except in an emergency or when using equipment provided by the race committee. This restriction also applies to mobile telephones.
- 2.5 For SKUD 18 events, Class Rule J.4 will apply.
- 2.6 For Sonar events, this will be a Sonar Class Association Appendix B - Alternative Rules event.
- 2.7 For Paralympic One Person Keelboat events:
 - 2.7.1 From 1 February 2016, One-Person Keelboats shall compete under the 2.4 Norlin One Design class rules.
- 2.8 For Kiteboarding, the event format, scoring and any change to the rules are detailed in NoR/SI Addendum C. If there is a conflict between the Addendum C and these rules, the Addendum C will take precedence.
- 2.9 For the Men's Skiff, Women's Skiff, Mixed Two Person Multihull and Two Person Paralympic events, RRS 44.1 and RRS P2.1 are changed so that the Two-Turns Penalty is replaced by the One-Turn Penalty.
- 2.10 In RRS 44.2 insert after the first sentence: However if Mark 1a is set, a boat may delay taking a penalty for an incident in the zone around Mark 1 or on the leg between Mark 1 and Mark 1a, until she has passed Mark 1a.
- 2.11 In all rules governing this regatta;
 - 2.11.1 Both 'athlete' and 'competitor' mean a person competing or intending to compete in the event.
 - 2.11.2 The term 'support team' means coaches, team leaders and other support personnel.
 - 2.11.3 [DP] denotes a rule for which the penalty is at the discretion of the International Jury;
 - 2.11.4 [SP] denotes a rule for which a standard penalty may be applied by the race committee without a hearing or a discretionary penalty applied by the International Jury with a hearing; and
 - 2.11.5 [NP] denotes a rule that shall not be grounds for protests by a boat. This changes RRS 60.1(a).

2.12 RRS 63.7 is changed to read: 'If there is a conflict between rules, the protest committee shall resolve that conflict in the manner that it believes will provide the fairest result for all boats affected.'

2.13 If there is a conflict between languages the English text will take precedence.

3 ELIGIBILITY AND ENTRY

3.1 Only competitors invited by World Sailing will be eligible to enter each event. Invitations will be issued in accordance with the 2016 SWC Qualification System. Substitution of competitors will not be allowed without prior written approval of the World Sailing Technical Delegate on behalf of the OA and shall comply with any restrictions in the NoR/SI.

3.2 Competitors shall confirm acceptance of the invitation to be received by World Sailing by the date and time specified on the invitation. Failure to do this will be grounds for World Sailing to revoke the invitation.

3.3 For Paralympics events, competitors shall send an email to swc@sailing.org to request an invitation to enter a specific SWC Round.

3.4 To remain eligible competitors shall complete the on-line registration and pay the required fees by the date specified in the letter of invitation, unless otherwise agreed by World Sailing in writing.

3.5 When a competitor accepts an invitation and withdraws within one month of the event without written approval, World Sailing may exclude that competitor from his/her next home continent Sailing World Cup Round or impose any similar sanction.

3.6 World Sailing Eligibility shall apply. Each competitor shall be registered as a World Sailing Sailor on the World Sailing website.

3.7 Entries shall be endorsed by the MNA of the competitors entering a boat.

3.8 Nationality

3.8.1 Unless otherwise approved by the IOC or the World Sailing Board, each competitor shall be a national of the country of the Member National Authority (MNA) which enters the boat or endorses the person in charge (as defined by RRS 46). Each competitor shall present proof of their nationality when requested.

3.8.2 Under exceptional circumstances, the Technical Delegate may authorise a crew substitute from a different nationality and NoR/SI 3.8.1 does not then apply.

3.9 Competitors under 18 years of age shall present a signed and completed parent (or guardian) consent and declaration form at each on-site registration

- 3.10 The regatta is open to boats in events and equipment chosen for the 2016 Olympic Sailing Competition, 2016 Paralympic Sailing Competition and Open Kite Boarding as per the table below. Gender requirements will also apply for each event as per the table below:

Event	Equipment	SWC Qingdao	SWC Final
Men's Windsurfer	RS:X	Yes	Yes
Women's Windsurfer	RS:X	Yes	Yes
Men's One Person Dinghy	Laser	Yes	Yes
Women's One Person Dinghy	Laser Radial	Yes	Yes
Heavyweight Men's One Person Dingy	Finn	Yes	Yes
Men's Skiff	49er	Yes	Yes
Women's Skiff	49er FX	Yes	Yes
Men's Two Person Dinghy	470	Yes	Yes
Women's Two Person Dinghy	470	Yes	Yes
Mixed Two Person Multihull	Nacra 17	Yes	Yes
Paralympic One Person Keelboat	2.4 mR	No	Yes
Paralympic Two Person Keelboat	Skud 18	No	No
Paralympic Three Person Keelboat	Sonar	No	No
Open Kiteboard	Formula Kite	No	Yes

- 3.11 The organizing authority may cancel an event if the minimum number of entries has not been received 30 days before the registration day of each event. The minimum entry is ten boats in all events, except that for Skud 18 and Sonar the minimum entry is at discretion of the organizing committee. Competitors will be notified of cancelled events by email and posting on the event website. The entry fees for cancelled events will be refunded.

3.12 IFDS Functional Classification

3.12.1 Sailors in Paralympic events shall have a valid International Classification under the IFDS Functional Classification System.

3.12.2 Protest regarding classification may be filed with the on-site classifier not later than "first appearance". However, any protest will not be decided at the regatta.

- 3.13 Coach and support boats will be required to register and pay a fee, be insured and comply with local regulations to be permitted to use launching and berthing at the venue. Registration may be completed on line through the World Sailing website http://www.sailing.org/worldcup/sailorinfo/coach_registration.php. The organizing authority may refuse registrations and accept later registrations at their sole discretion.

4. ENTRY FEES

- 4.1 Fees for each SWC Round and SWC Final are stated in British pounds and include any local taxes:

Event	Entry Fee
One Person Events	GBP 255
Paralympic One Person Keelboat	GBP 200
Two Person Events	GBP 385
Coach or Support Boats (including one person)	GBP 120
Additional Coach or Support Person	GBP 40

- 4.2 For the SWC Final only: For the Men's One Person Dinghy and Women's One Person Dinghy events,

4.2.1 A charter fee of GBP 600 must be paid with the entry fee; and

4.2.2 Competitors shall complete a hire agreement with PSA and pay a refundable damage deposit of AUD \$350 at the time of collecting the boat.

- 4.3 If a sailor accepts an invitation and then fails to attend, or withdraws within 30 days of the start of the Round, without written approval, World Sailing will retain the entry fee.

5 [NP] [DP] INSURANCE

- 5.1 Each 'person in charge' (see RRS 46) shall hold a valid insurance certificate showing proof of third-party liability coverage as shown below:

Round	Minimum coverage per incident (or equivalent)
SWC Melbourne	AUS\$ 5,000,000
SWC Miami	US\$ 300,000
SWC Hyères	EURO € 1,500,000
SWC Weymouth and Portland	GBP 3,000,000
SWC Qingdao	US\$ 500,000
SWC Final - Melbourne	AUS\$ 5,000,000

- 5.2 The Organizing Authority is not responsible for verifying the status or validity of certificates.

6 RISK STATEMENT

Competitors and support team participate in the regatta entirely at their own risk and they are reminded of the provisions of RRS 4, Decision to Race. Sailing is by its nature an unpredictable sport and therefore involves an element of risk. By taking part in the event, each competitor agrees and acknowledges that:

- 6.1 They are aware of the inherent element of risk involved in the sport and accept responsibility for the exposure of themselves, their crew and their boat to such inherent risk whilst taking part in the event;
- 6.2 They are responsible for the safety of themselves, their crew, their boat and their other property whether afloat or ashore;
- 6.3 They accept responsibility for any injury, damage or loss to the extent caused by their own actions or omissions;
- 6.4 By participating in any race, they are satisfied that their boat is in good order, equipped to sail in the event and they are fit to participate;
- 6.5 The provision of a race management team, patrol boats, umpires and other officials and volunteers by the organiser does not relieve them of their own responsibilities;
- 6.6 The provision of patrol boat cover is limited to such assistance, particularly in extreme weather conditions, as can be practically provided in the circumstances.

7 MEDIA RIGHTS

By participating in an event of the Sailing World Cup competitors automatically grant to the organizing authority, World Sailing and their sponsors, the right in perpetuity to make, use and show, from time to time at their discretion, any motion pictures and live, taped or filmed television and other reproductions of the athlete during the period of the competition without compensation.

8 [DP] CODE OF CONDUCT

- 8.1 Competitors shall comply with any reasonable request from a regatta official.
- 8.2 Competitors shall handle any boats or equipment provided by the organizing authority with proper care and seamanship, and in compliance with any written instructions.
- 8.3 Boats that are on a Course Area or passing through a Course Area to which they are not assigned shall remain clear of the area where boats are racing and any official boat.
- 8.4 World Sailing may reduce or remove a prize in the case of misconduct or refusal to comply with any reasonable request, including attendance at official functions.

9 [DP] IDENTIFICATION AND ADVERTISING

- 9.1 When provided by the organizing authority, boats or competitors shall carry, display or wear the following as instructed:
 - 9.1.1 Bibs for all competitors;
 - 9.1.2 Coloured bibs for Event leaders (1st, 2nd and 3rd);
 - 9.1.3 Coloured dots on the mainsail for Event leaders (1st, 2nd, 3rd);

- 9.1.4 Bow number;
- 9.1.5 Event advertising;
- 9.1.6 Cameras and sound equipment; and
- 9.1.7 [SP] Tracking and timing system equipment.

- a) A tracking socket will be supplied to all competitors from their assigned tracking desk before the first racing day. Competitors shall securely mount the socket to their boat as per the supplied instructions.
- b) Competitors shall collect a tracking module from their assigned tracking desk, which shall be securely fitted to the tracking socket before racing each day.
- c) On return to shore competitors shall return the tracking module within the protest time limit to the same place that they received it.

- 9.2 [SP] For Olympic events, boats shall display national flags on mainsails as specified in their class rules. If the class rules do not include specification for display of national flags, they shall be displayed in accordance with World Sailing National Flags Specifications.

10 [DP] [NP] SAFETY REGULATIONS

- 10.1 Competitors shall wear personal flotation devices at all times while afloat, except briefly while changing or adjusting clothing or personal equipment.

- 10.1.1 For the SWC Final only, Australian Sailing (former Yachting Australia) Special Regulations Part 2 Off the Beach Boat will apply.

It will be the responsibility of all competitors to ensure that personal flotation devices comply with a standard equivalent to those listed in YA Special Regulations 5.01 Personal Flotation Devices.”

<http://www.sailing.org.au/wp-content/uploads/2013/10/121211-2013-16-special-regulations-part-2-off-the-beach-boats.pdf>

- 10.2 Boats not leaving the harbour for a scheduled race shall promptly notify the Race Office.
- 10.3 [SP] Before leaving to race on each scheduled racing day, a competitor from each boat shall personally sign out on the required form.
- 10.4 [SP] Within 30 minutes after returning ashore, but no later than the protest time limit for that event, a competitor from each boat shall personally sign in on the required form.
- 10.5 A boat that retires from racing shall notify the race committee before leaving the racing area, or if that is not possible, shall notify the race office as soon as possible after returning ashore but no later than the protest time limit, by completing a retirement declaration form.
- 10.6 Boats shall avoid commercial traffic and shall cross shipping channels as close to right angles as practical, unless changed in the Round SI.

10.7 [SP] Flag AP over H displayed ashore means 'Boats shall not leave the harbour. Wait for further instructions.' This adds to Race Signals AP over H.

10.8 When the race committee displays flag V with repetitive sounds, all official and support boats shall monitor the race committee radio channel for that racing area for search and rescue instructions. The race committee will announce 'Flag Victor' using the designated VHF Channel.

11 COMMUNICATIONS WITH COMPETITORS

11.1 The Sailing World Cup Official Notice Board will be www.sailing.org/worldcup/onb.php

11.2 Changes to the Sailing Instructions

11.2.1 Changes to the sailing instructions will be posted no later than two hours before the scheduled time of the first race affected.

11.2.2 Any change to the sailing instructions will be approved by the Principal Race Officer and the World Sailing Technical Delegate.

11.3 When a visual signal is displayed over an area or event flag, the signal applies only to that area or event. This changes the Race Signals preamble.

11.4 Event flags will be class insignia on the following background:

Event	Class Insignia	Background Colour
Men's Windsurfer	RS:X	White
Women's Windsurfer	RS:X	Light Blue
Men's One Person Dinghy	Laser	White
Women's One Person Dinghy	Laser Radial	Light Blue
Heavyweight Men's One Person Dinghy	Finn	White
Men's Skiff	49er	White
Women's Skiff	49er FX	Light Blue
Men's Two Person Dinghy	470	White
Women's Two Person Dinghy	470	Blue
Mixed Two Person Multihull	Nacra 17	White
Open Kiteboard	Formula Kite	Green

12. [DP] EQUIPMENT

12.1 Boats shall be available for equipment inspection from 12:00h on the day before the first scheduled race (Day Zero).

12.2 For the Men's Skiff event, gennakers with serial number below 109686 or Olympic national flag gennakers shall be used. This changes Class Rule C10.4(b).

13 FORMAT

13.1 The format for each Olympic event will be an opening series and a medal race.

13.2 The format for each Paralympic event will be an opening series.

13.3 Medal Race

13.3.1 A medal race will be scheduled for each Olympic event with 3 or more opening series races completed.

13.3.2 The ten boats ranked highest in the opening series will be assigned to compete in the medal race series.

13.3.3 Assignments to a medal race will be based on the ranking available at 0900 on the day of the medal race series. The protest committee may extend the time limit.

14 SCHEDULE AND COURSE ASSIGNMENTS

14.1 The schedule for each Round will be as follows:

Event		SWC Rounds
Registration for competitors and coaches		Monday
First Briefing for coaches		Tuesday 18:00
Opening Ceremony		Tuesday 18:30
Opening Series		Wednesday to Saturday
Medal Race		Sunday
Closing Ceremony	Paralympic Events	Saturday
	Olympic Events & Kites	Sunday

14.2 The schedule for the Final will be as follows:

Event	SWC Final
Registration for competitors and coaches	Sunday 4 Dec - 1200 to 1700 Monday 5 Dec – 0900 to 1200
First Briefing for coaches and sailors	Monday 5 Dec - 17:00
Opening Ceremony	Monday 5 Dec - 17:00
Opening Series 49er, 49erFX, RS:Xs, Nacra 17 and Formula Kite	Tues 6 to Fri 9 December

2.4mR, Laser, Radial, Finn and 470s	Tues 6 to Sat 10 December
Medal Race 49er, 49erFX, RS:Xs, Nacra 17 and Open Kite	Saturday 10 December (Sun 11 Dec Reserve day)
Laser, Radial, Finn and 470s	Sunday 11 December
Closing Ceremony All events	Sunday 11 December – 18:00

14.3 The number of races including the medal race, if any, will be as follows:

Event	SWC Rounds	SWC Final
470 M, 470 W, Laser, Laser Radial, Finn	8 + 1 Medal Race	10 + 1 Medal Race
RS:X M, RS:X W, 49er, 49erFX, Nacra 17	12 + 1 Medal Race	12 + 1 Medal Race
2.4mR, Skud 18, Sonar	8	10
Formula Kite	N/A	24 + Medal Races

14.4 The provisional race schedule, including the time of the first warning signals, and assignments of Events to course areas will be posted as RSI Addendum 3 no later than one week before the first race of each Round.

14.4.1 An update to RSI Addendum 3 will be posted daily no later than 2000 on the previous evening of any race affected.

14.5 Any reassignment of Events to Course Areas will be posted;

14.5.1 before 0900 on the day it will take effect, or

14.5.2 when flag AP is displayed ashore, 30 minutes before flag AP for that event or fleet is removed; or

14.5.3 when flag AP is displayed afloat, the course area may be changed. A Race Committee boat will display flag L over the event(s) flag and move to the new Course Area.

14.6 Races not sailed on the scheduled day may be sailed on the following day at the discretion of the race committee, including sailing an opening series race on the provisional medal race day.

14.7 A medal race will not be scheduled on the same day as an opening series race for that Event.

14.8 On the last Sunday, no warning signal will be made after 16:30 h.

15 THE COURSES

15.1 The courses will be Windward/Leeward or Trapezoid. The diagrams in NoR/SI Addendum B show the courses, the course designations, the approximate angles between legs, the order in which marks are to be passed, and the side on which each mark is to be left.

15.2 To change the next leg of the course, the race committee will (a) lay a new mark, (b) move the finishing line, or (c) move the leeward gate. When a new mark is laid, the original mark will be removed as soon as possible. When in a subsequent change a new mark is replaced, it will be replaced by an original mark.

15.3 Courses will not be shortened. This changes RRS 32.

16 THE START

16.1 The starting line will be between a staff displaying an orange flag on the race committee vessel at the starboard end and either

(a) the course side of the port-end inflatable starting mark, or

(b) a staff displaying an orange flag on the race committee vessel at the port end.

16.2 A buoy may be attached to the race committee starting boat anchor line just below keel depth. Boats shall not pass between this buoy and the race committee starting boat at any time. This buoy is part of the race committee starting boat ground tackle. [DP]

16.3 When a starting sequence is in progress, boats whose warning signal has not been made shall avoid the starting area. The starting area is defined as a rectangle 75 meters from the starting line and marks in all directions. [DP]

16.4 Rule 26 and Preparatory Signals in Race Signals are deleted. Races will be started using the following signals. Times shall be taken from the display of visual signals. The absence of a sound signal shall be disregarded. This changes RRS 26 and Race Signals.

Minutes before starting signal	Visual signal displayed	Visual signal removed	Sound signal	Means
6	Event flag		No sound	Event to start
	P or U or Black			Starting penalty
	Flag O (if Applicable)			RRS P5
5	White flag with number 5		One	Warning signal
4	Blue flag with number 4	White flag	One	Preparatory signal
3	Pink flag with number 3	Blue flag	One	Three minutes
2	Red flag with number 2	Pink flag	One	Two minutes
1	Yellow flag with number 1	Red flag	One long	One minute
0	Green flag	Yellow flag	One	Start signal
+ 1		Green flag and Class Flag P, U or Black and O	No sound	

16.5 When flag U has been displayed, no part of a boat's hull, crew or equipment shall be in the triangle formed by the ends of the starting line and the first mark during the last minute before her starting signal. If a boat breaks this rule and is identified, she shall be disqualified without a hearing but not if the race is restarted or re-sailed. This changes RRS 26, 63.1 and A5. RRS 29.1 (Individual Recall) does not apply. The scoring abbreviation under this rule is OCS. This changes A11 Scoring Abbreviations.

16.6 To alert boats that a race or sequence of races will begin soon, the orange starting line flag will be displayed with one sound at least five minutes before a warning signal is made.

16.7 The warning signal for each succeeding race will be made as soon as practicable.

17 THE FINISH

17.1 The finishing line will be between a staff displaying an orange flag on the race committee vessel and either:

17.1.1 the course side of the nearby inflatable finishing mark, or

17.1.2 a staff displaying an orange flag on the nearby race committee vessel.

18 TIME LIMITS AND TARGET TIMES

18.1 For opening series, time limits and target times are as follows:

Event	Time Limit	Mark 1 Time Limit	Finish Window	Target Time
470 M, 470 W, Laser, Laser Radial, Finn	75	25	15	50
Nacra 17	50	20	10	30
49er and 49er FX	50	20	10	35
RS:X M, RS:X W	45	20	10	20-25
Paralympic Events	90	30	20	50

18.2 For medal race, time limits and target times are as follows:

Event	Time Limit	Mark 1 Time Limit	Finish Window	Target Time
49er, 49er FX, RS:X M, RS:X W, Nacra 17	40	10	10	20
All other Events	40	15	10	25

18.3 If no boat rounds Mark 1 within the Mark 1 time limit, the race committee shall abandon the race.

18.4 Any boat that does not finish within the Finish Window (time after the first boat finishes) shall be scored DNF without a hearing. This changes RRS 63.1 and A5.

19 SCORING

- 19.1 The Low Point System of RRS Appendix A will apply. RRS B8 is deleted.
- 19.2 When fewer than three opening series races have been completed, a boat's series score will be the total of her race scores. When three or more opening series races have been completed, a boat's score will be the total of her race scores excluding her worst score. However, the score from any medal race will not be excluded.
- 19.3 A boat starting later than 4 minutes after her starting signal will be scored Did Not Start. This changes RRS A4 and A5.
- 19.4 RRS A4.2 is changed so that those scores are based on
- 19.4.1 The number of boats assigned to compete in a single series, or
 - 19.4.2 For the medal race, the number of boats assigned to the medal race.
- 19.5 One race is required to be completed to constitute a regatta.
- 19.6 For the medal race RRS A4.1 is changed so that the points are doubled. RRS A4.2 is changed so that the scores are based on the number of boats assigned in that race and then doubled.
- 19.7 For boats assigned to compete in the medal race, ties will be broken by the medal race score. This changes RRS A8. For tied boats with the same points score in the medal race, ties will be broken applying RRS A8 to the opening series scores.
- 19.8 A boat assigned to compete in the medal race shall make a genuine effort to start, sail the course and finish. The penalty for a breach of this instruction will be ranking the boat tenth in the regatta. If there are two such boats, they will be ranked ninth and tenth, in order of their opening-series ranks, and so on. This changes RRS A2.
- 19.9 The boats competing in the medal race shall be scored highest in the regatta. This may not apply to a boat disqualified under RRS 5, 6 or 69.
- 19.10 To request correction of an alleged error in posted race or series results, a boat may complete a scoring enquiry form available at the race office.

20. INTERNATIONAL JURY. PROTESTS, PENALTIES AND REQUESTS FOR REDRESS

- 20.1 An International Jury will be appointed in accordance with rule RRS 91(b).
- 20.2 Protest forms are available at the Race Office or Jury Office. Protests and requests for redress or reopening shall be delivered to the Jury Office within the appropriate time limit.
- 20.3 Notices will be posted within 30 minutes of the protest time limit to inform competitors of hearings in which they are parties or named as witnesses. Hearings will be held beginning at the time posted. Hearings may be scheduled to begin up to 30 minutes before the end of protest time Limit.

- 20.4 Notices of protests by the race committee or protest committee will be posted to inform boats under RRS 61.1(b).
- 20.5 A list of boats that have been penalized under Appendix P for breaking RRS 42 and under SI 20.7 will be posted.
- 20.6 Penalties for breaches of the class rules, RRS 55 or rules in the NoR and SIs marked [DP] or [SP] should the case go to a hearing, are at the discretion of the protest committee.
- 20.7 For breaches of NoR/SI marked [SP], the race committee may apply a standard penalty without a hearing. A list of these breaches and the associated standard penalties will be posted on the Official Notice Board. However, the race committee may protest a boat when they consider the standard penalty to be inappropriate. A boat that has been penalised with a standard penalty can neither be protested for the same incident by another boat nor can another boat request redress for this race committee action. This changes RRS 60.1, 63.1 and Appendix A5.
- 20.8 On the last day of opening series, or on the last scheduled day of racing, a request for reopening a hearing shall be delivered
- (a) within the protest time limit if the requesting party was informed of the decision on the previous day;
 - (b) no later than 30 minutes after the requesting party was informed of the decision on that day;
- This changes RRS 66.
- 20.9 On the last day of the opening series, or on the last scheduled day of racing, a request for redress based on a jury decision shall be delivered no later than 30 minutes after the decision was posted. This changes RRS 62.2.

21 OFFICIAL BOATS

21.1 Identification

Equipment Inspection – Any flag with “M” or “Measurer”

Jury/Judges/Umpires – Any flag with “JURY”, “IJ” or “J”

Media – Any flag with “PRESS”, “MEDIA” or “TV”

Organizers/VIP – Any flag with “VIP”

Race Committee – Any flag with letter of the racing area or with “RC” or “Race Committee”

Rescue or Course Marshals – Any flag with “Marshall”, “RESCUE” or “SAFETY”

First Aid or Medical – Green cross on a white background.

21.2 Actions by official boats, drones or helicopters shall not be grounds for requesting redress by a boat. This changes RRS 60.1(b).

22 PRIZES AND SOCIAL FUNCTION REQUIREMENTS

22.1 SWC Medals will be awarded to the top 3 boats in each event.

22.2 Prize Money

22.2.1 For the SWC Final, prize money for each Event will be as follows:

1st Position: AUD 10,000

2nd Position: AUD 5,000

3rd Position: AUD 3,000

22.2.2 For the SWC Qingdao, prize money for each Event will be as follows:

1st Position: EUR 9,000

2nd Position: EUR 4,000

3rd Position: EUR 2,000

22.2.3 When fewer than 10 boats are entered the prize money will be allocated for the first and second position only.

22.3 World Sailing may reduce or remove a prize in the case of misconduct or refusal to comply with any reasonable request, including attendance at official functions.

Addendum A – Prescriptions of the Member National Authorities

A1 SWC Melbourne - Yachting Australia

No national prescriptions will apply

A2 SWC Miami - US Sailing

A2.1 RRS 67 DAMAGES

US SAILING prescribes that:

- (a) A boat that retires from a race or accepts a penalty does not, by that action alone, admit liability for damages.
- (b) A protest committee shall find facts and make decisions only in compliance with the rules. No protest committee or US SAILING appeals authority shall adjudicate any claim for damages. Such a claim is subject to the jurisdiction of the courts.
- (c) A basic purpose of the rules is to prevent contact between boats. By participating in an event governed by the rules a boat agrees that responsibility for damages arising from any breach of the rules shall be based on fault as determined by application of the rules, and that she shall not be governed by the legal doctrine of 'assumption of risk' for monetary damages resulting from contact with other boats.

A2.2 RRS 76.1 EXCLUSION OF BOATS OR COMPETITORS

US SAILING prescribes that an organizing authority or race committee shall not reject or cancel the entry of a boat or exclude a competitor eligible under the notice of race and sailing instructions for an arbitrary or capricious reason or for reason of race, color, religion, national origin, gender, sexual orientation, or age.

A3 SWC Hyères - Fédération Française de Voile

A3.1 RRS 64.3 DECISIONS ON PROTESTS CONCERNING CLASS RULES

The jury may ask the parties to the protest, prior to checking procedures, a deposit covering the cost of checking arising from a protest concerning class rules.

A3.2 RRS 67 DAMAGES

Any question about or request of damages arising from an incident involving a boat bound by the Racing Rules of Sailing or International Regulation to Prevent Collision at Sea depends on the appropriate courts and will not be dealt by the jury.

A3.3 RRS 70.5 APPEALS AND REQUESTS TO A NATIONAL AUTHORITY

In such circumstances, the written approval of the Fédération Française de Voile shall be received before publishing the notice of race and shall be posted on the official notice board during the event.

A4 SWC Weymouth & Portland - Royal Yachting Association

A4.1 RSS 5 ANTI-DOPING

The national authority procedural rules required by World Sailing regulation 21.16 to implement the World Anti-Doping Code through World Sailing regulation 21 are the RYA Rules and Procedures for Anti-Doping, as published on the RYA website.

A4.2 RRS 67 DAMAGES

1. Any claim for damages arising from an incident while a boat is bound by the Racing Rules of Sailing shall be subject to the jurisdiction of the courts and not considered by a protest committee.
2. A boat that takes a penalty or retires does not thereby admit liability for damages or that she has broken a rule.

A4.3 RRS 86.3 CHANGES TO THE RACING RULES

An organizing authority wishing to develop and test a rule change shall obtain prior approval from the RYA. The organizing authority shall promptly report the results of the test to the RYA.

A4.4 RRS 88.2 CHANGES TO NATIONAL AUTHORITY PRESCRIPTIONS

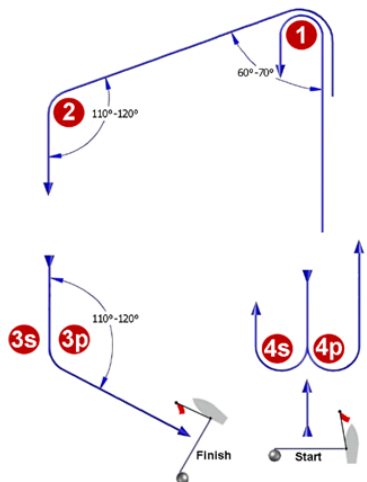
Notices of race and sailing instructions shall not change a prescription of the RYA. However, when an international jury has been appointed for an event, only the prescriptions of rules 5, 67, 86.3 and 88.2 shall apply.

A5 SWC Qingdao - Chinese Yachting Association

No national prescriptions will apply.

ADDENDUM B - COURSE ILLUSTRATIONS

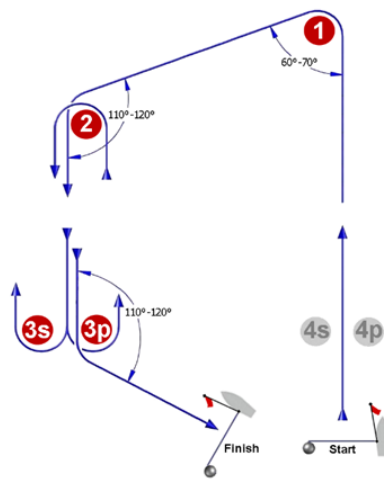
I



Course: Inner Trapezoid

Signal	Mark Rounding Order
I2	Start - 1 - 4s/4p - 1 - 2 - 3p - Finish
I3	Start - 1 - 4s/4p - 1 - 4s/4p - 1 - 2 - 3p - Finish
I4	Start - 1 - 4s/4p - 1 - 4s/4p - 1 - 4s/4p - 1 - 2 - 3p - Finish

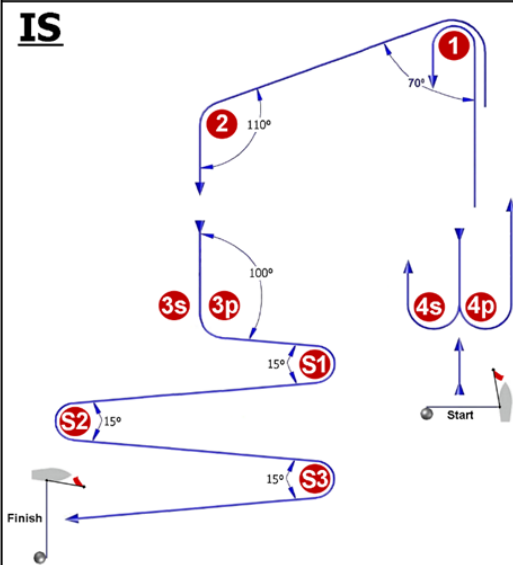
O



Course: Outer Trapezoid

Signal	Mark Rounding Order
O2	Start - 1 - 2 - 3s/3p - 2 - 3p - Finish
O3	Start - 1 - 2 - 3s/3p - 2 - 3s/3p - 2 - 3p - Finish
O4	Start - 1 - 2 - 3s/3p - 2 - 3s/3p - 2 - 3s/3p - 2 - 3p - Finish

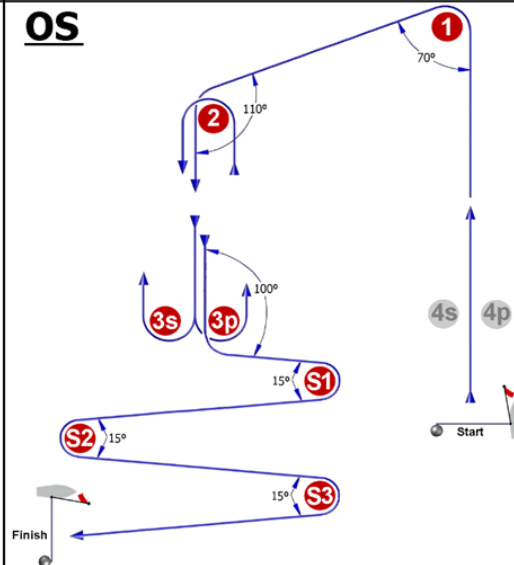
IS



Course: Inner Slalom

Signal	Mark Rounding Order
IS2	Start - 1 - 4s/4p - 1 - 2 - 3p - S1 - S2 - S3 - Finish
IS3	Start - 1 - 4s/4p - 1 - 4s/4p - 1 - 2 - 3p - S1 - S2 - S3 - Finish
IS4	Start - 1 - 4s/4p - 1 - 4s/4p - 1 - 4s/4p - 1 - 2 - 3p - S1 - S2 - S3 - Finish

OS

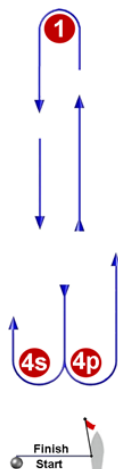


Course: Outer Slalom

Signal	Mark Rounding Order
OS2	Start - 1 - 2 - 3s/3p - 2 - 3p - S1 - S2 - S3 - Finish
OS3	Start - 1 - 2 - 3s/3p - 2 - 3s/3p - 2 - 3p - S1 - S2 - S3 - Finish
OS4	Start - 1 - 2 - 3s/3p - 2 - 3s/3p - 2 - 3s/3p - 2 - 3p - S1 - S2 - S3 - Finish

ADDENDUM B - COURSE ILLUSTRATIONS

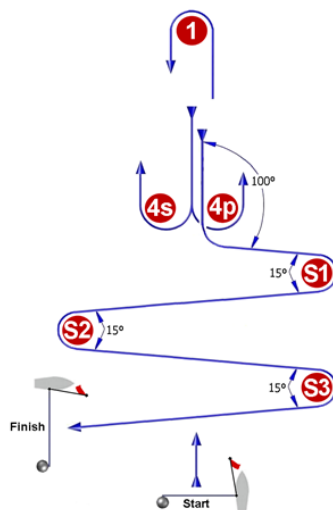
L



Course: Windward/Leeward

Signal	Mark Rounding Order
L2	Start - 1 - 4s/4p - 1 - Finish
L3	Start - 1 - 4s/4p - 1 - 4s/4p - 1 - Finish
L4	Start - 1 - 4s/4p - 1 - 4s/4p - 1 - 4s/4p - 1 - Finish

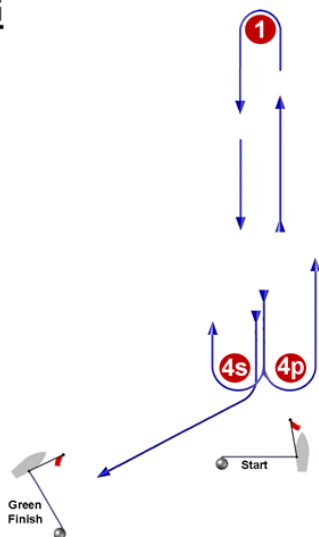
LS



Course: Windward/Leeward With Slalom Finish

Signal	Mark Rounding Order
LS2	Start - 1 - 4s/4p - 1 - 4p - S1 - S2 - S3 - Finish
LS3	Start - 1 - 4s/4p - 1 - 4s/4p - 1 - 4p - S1 - S2 - S3 - Finish
LS4	Start - 1 - 4s/4p - 1 - 4s/4p - 1 - 4s/4p - 1 - 4p - S1 - S2 - S3 - Finish

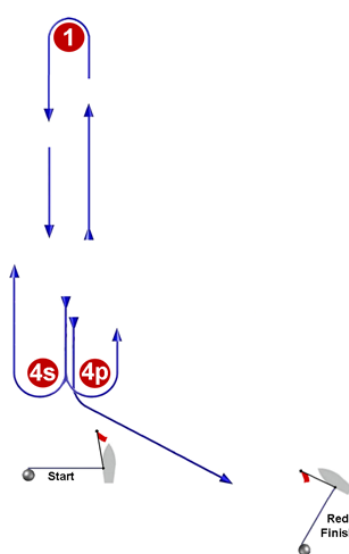
LG



Course: Windward/Leeward

Signal	Mark Rounding Order
LG2	Start - 1 - 4s/4p - 1 - 4s - Finish
LG3	Start - 1 - 4s/4p - 1 - 4s/4p - 1 - 4s - Finish
LG4	Start - 1 - 4s/4p - 1 - 4s/4p - 1 - 4s/4p - 1 - 4s - Finish

LR

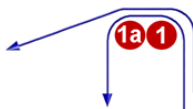


Course: Windward/Leeward

Signal	Mark Rounding Order
LR2	Start - 1 - 4s/4p - 1 - 4p - Finish
LR3	Start - 1 - 4s/4p - 1 - 4s/4p - 1 - 4p - Finish
LR4	Start - 1 - 4s/4p - 1 - 4s/4p - 1 - 4s/4p - 1 - 4p - Finish

ADDENDUM B - COURSE ILLUSTRATIONS

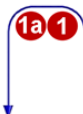
IA



Course: Same As Course I Except With Offset Mark 1A

Signal	Mark Rounding Order
<u>IA2</u>	Start - 1 - 1a - 4s/4p - 1 - 1a - 2 - 3p - Finish
<u>IA3</u>	Start - 1 - 1a - 4s/4p - 1 - 1a - 4s/4p - 1 - 1a - 2 - 3p - Finish
<u>IA4</u>	Start - 1 - 1a - 4s/4p - 1 - 1a - 4s/4p - 1 - 1a - 4s/4p - 1 - 1a - 2 - 3p - Finish

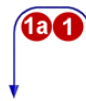
LA



Course: Same As Course L Except With Offset Mark 1A

Signal	Mark Rounding Order
<u>LA2</u>	Start - 1 - 1a - 4s/4p - 1 - 1a - Finish
<u>LA3</u>	Start - 1 - 1a - 4s/4p - 1 - 1a - 4s/4p - 1 - 1a - Finish
<u>LA4</u>	Start - 1 - 1a - 4s/4p - 1 - 1a - 4s/4p - 1 - 1a - 4s/4p - 1 - 1a - Finish

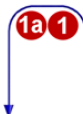
LGA



Course: Same As Course LG Except With Offset Mark 1A

Signal	Mark Rounding Order
<u>LGA2</u>	Start - 1 - 1a - 4s/4p - 1 - 1a - 4s - Finish
<u>LGA3</u>	Start - 1 - 1a - 4s/4p - 1 - 1a - 4s/4p - 1 - 1a - 4s - Finish
<u>LGA4</u>	Start - 1 - 1a - 4s/4p - 1 - 1a - 4s/4p - 1 - 1a - 4s/4p - 1 - 1a - 4s - Finish

LRA



Course: Same As Course LR Except With Offset Mark 1A

Signal	Mark Rounding Order
<u>LRA2</u>	Start - 1 - 1a - 4s/4p - 1 - 1a - 4p - Finish
<u>LRA3</u>	Start - 1 - 1a - 4s/4p - 1 - 1a - 4s/4p - 1 - 1a - 4p - Finish
<u>LRA4</u>	Start - 1 - 1a - 4s/4p - 1 - 1a - 4s/4p - 1 - 1a - 4s/4p - 1 - 1a - 4p - Finish

Addendum C – Formula Kite Open

C1 RULES

- C1.1 RRS Appendix F shall apply, except as changed by these NoR/SI.
- C1.2 The changes to the RRS approved by the IKA shall apply. They are detailed in section C28 of this addendum.
- C1.3 The NoR/SI for the Sailing World Cup apply unless changed by a rule in this Addendum. If there is a conflict between the Addendum C and the general NoR/SI, the Addendum C will take precedence.

C10 [SP] [NP] SAFETY REGULATIONS

When stored on the beach in the launching area, hulls shall be placed with the fins down towards the sand.

C13 FORMAT

- C13.1 The format will be an opening series followed by a medal series. The opening series will consist of a qualifying series and a final series.
- C13.2 Qualifying Series
 - C13.2.1 Initially kiteboards will be assigned to flights Yellow and Blue of, as nearly as possible, equal size and ability. Initial assignments will be made by the race committee based on the kiteboards current standing in the world ranking. Those assignments will be posted at least 30 minutes before the first warning signal is made and will not be grounds for redress. This changes rule 62.1(a)
 - C13.2.2 In the qualifying series kiteboards will be reassigned to flights after each day of racing, except if on the first day only one race is completed. If all flights have completed the same number of races, kiteboards will be reassigned based on their ranks in the series. If all flights have not completed the same number of races, the series scores for reassignment will be calculated for those races, numbered in order of completion, completed by all flights.
 - C13.2.3 Assignments will be based on the ranking available at 2100 on the day before they take effect regardless of protests or requests for redress not yet decided.
 - C13.2.4 If all flights have not completed the same number of races by the end of a day, the flights with fewer races will continue racing the following day until all flights have completed the same number of races. All kiteboards will thereafter race in the new flights.
- C13.3 Final Series
 - C13.3.1 The final series will be scheduled when 3 or more qualifying series races are completed.
 - C13.3.2 Kiteboards will be assigned to final-series fleets Gold and Silver based on their ranking in the qualifying series. There will be the same number of fleets in the final series as there were in the qualifying series. The final-series fleets will have, as nearly as possible, equal size and the Silver fleet will not be bigger than the Gold fleet. Kiteboards with the best qualifying-series ranks will race all final-series races in the Gold fleet, kiteboards with the next-best qualifying-series ranking will race in the Silver fleet, etc.
 - C13.3.3 Assignments to the final series will be based on the ranking available at 0900 on the first day of the final series. The protest committee may extend the time limit.

C13.3.4 Any recalculation of qualifying-series ranking after kiteboards have been assigned to final-series fleets will not affect the assignments except that a redress decision may promote a kiteboard to a higher fleet.

C13.3.5 For the event overall standings, competitors are ranked in the order of the competitors competing in the final series Gold and Silver fleet standings. This may not apply to a kiteboard disqualified under RRS 5, 6 or 69.

C13.4 Medal Race

C13.4.1 A medal race will be scheduled when 3 or more opening series races are completed.

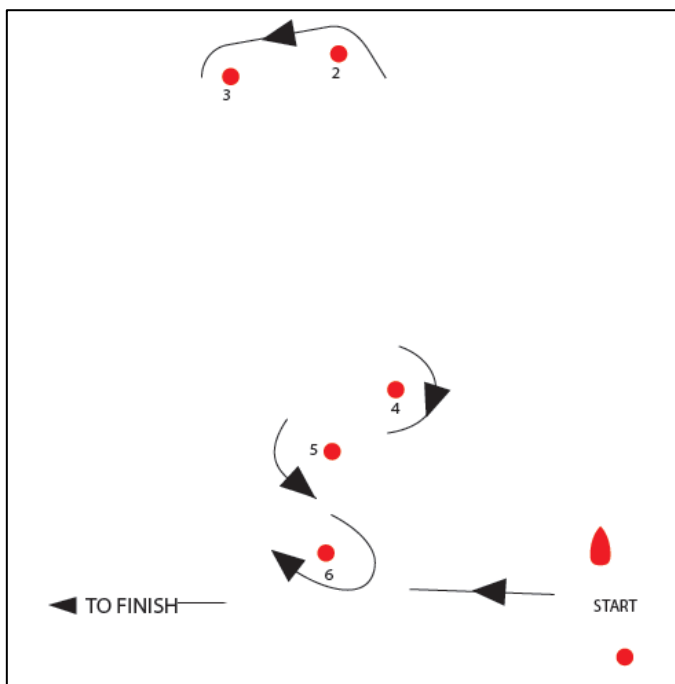
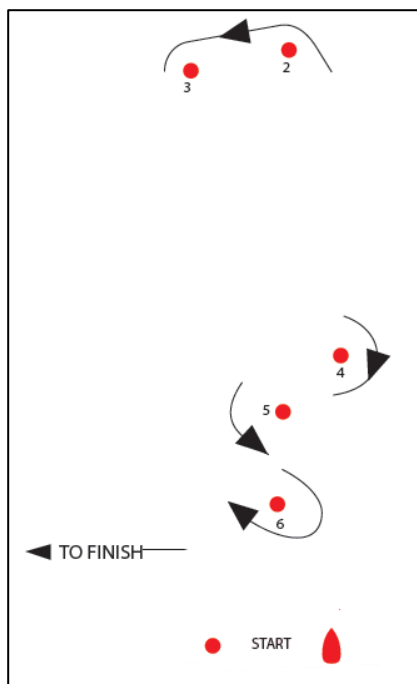
C13.4.2 The kiteboards assigned to the gold fleet of the opening series will be assigned to compete in the medal race series.

C14 SCHEDULE

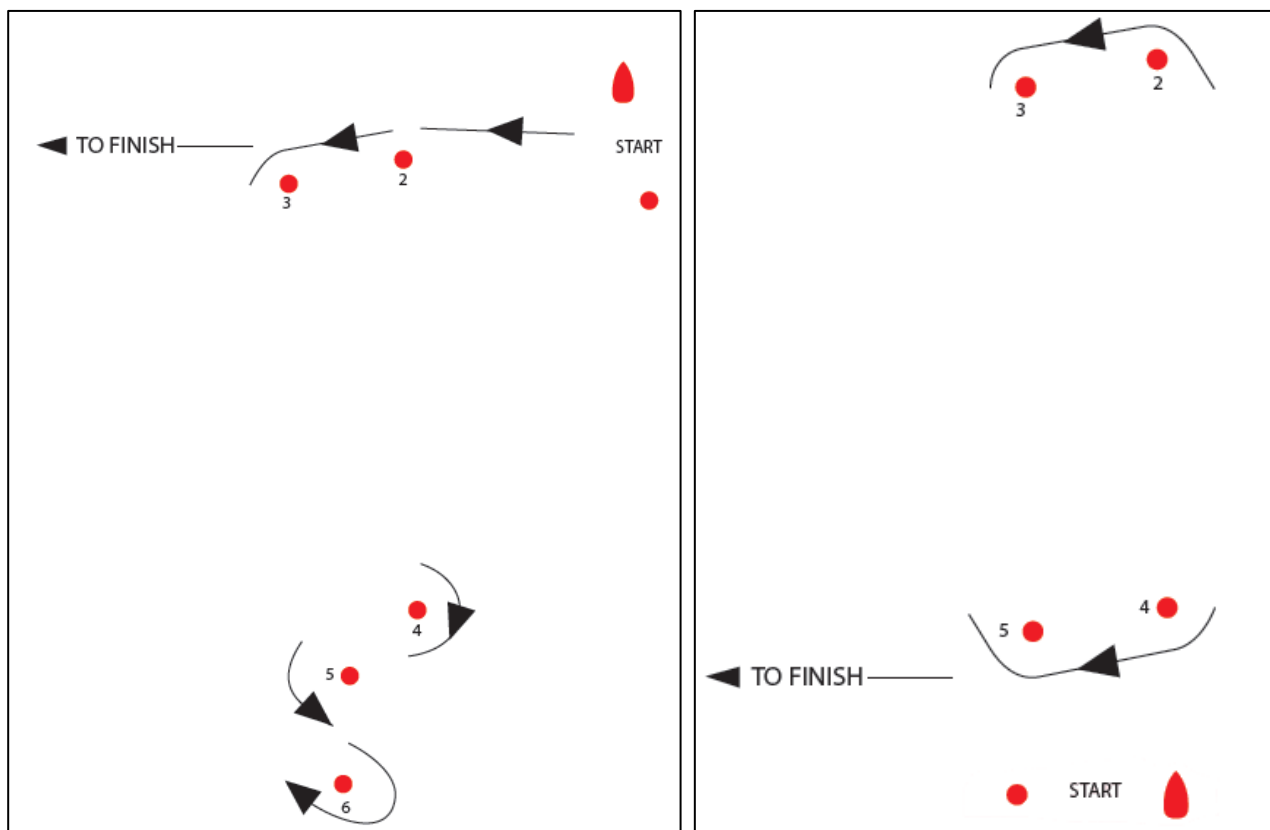
C14.2 Add to the schedule: Qualifying Series is scheduled for Tuesday 6 and Wednesday 7 December, Final Series is scheduled for Thursday 8 and Friday 9 December

C14.3 24 races are scheduled for the opening series. 3 races are scheduled for the medal race series.

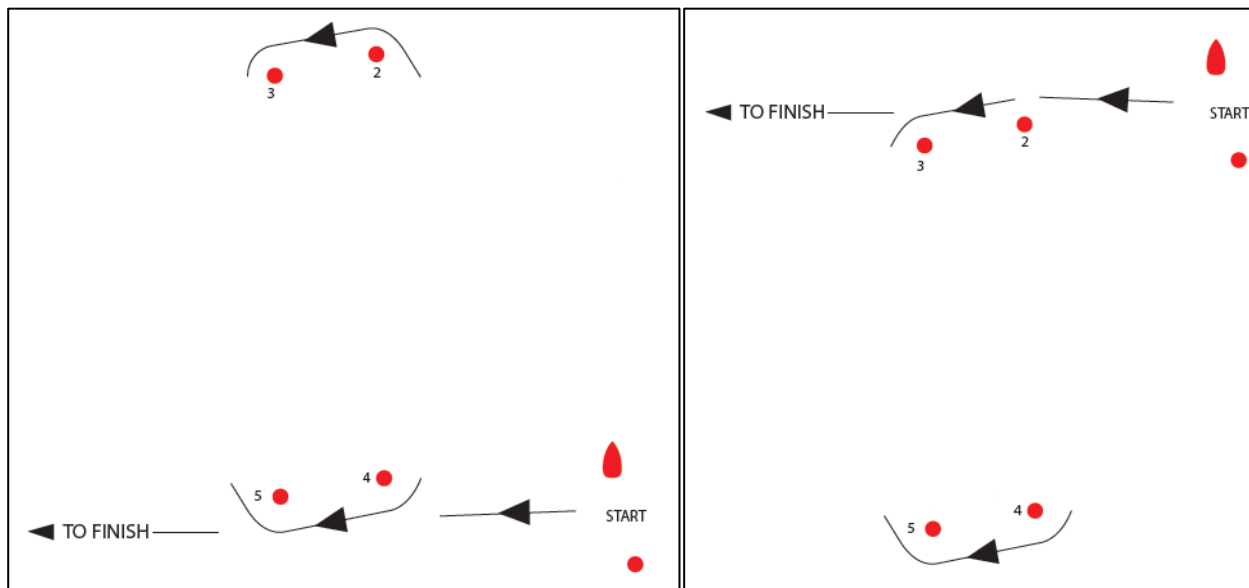
C15 COURSES



VU1	Start-2-3-4-5-6-Finish		VB1	Start-6-2-3-4-5-6-Finish
VU2	Start-2-3-4-5-6-2-3-4-5-6-Finish		VB2	Start-6-2-3-4-5-6-2-3-4-5-6-Finish
VU3	Start-2-3-4-5-6-2-3-4-5-6-2-3-4-5-6-Finish		VB3	Start-6-2-3-4-5-6-2-3-4-5-6-2-3-4-5-6-Finish

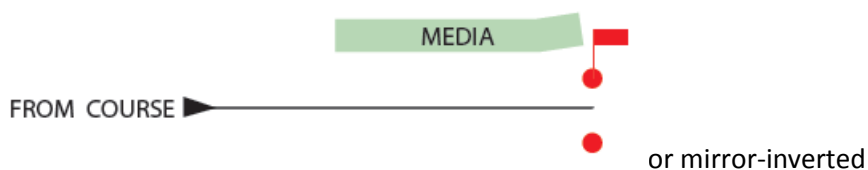


VT1	Start-2-3-4-5-6-2-3-Finish		XU1	Start-2-3-4-5-Finish
VT2	Start-2-3-4-5-6-2-3-4-5-6-2-3-Finish		XU2	Start-2-3-4-5-2-3-4-5-Finish
VT3	Start-2-3-4-5-6-2-3-4-5-6-2-3-4-5-6-2-3-Finish		XU3	Start-2-3-4-5-2-3-4-5-2-3-4-5-Finish



XB1	Start-5-2-3-4-5-Finish		XT1	Start-2-3-4-5-2-Finish
XB2	Start-5-2-3-4-5-2-3-4-5-Finish		XT2	Start-2-3-4-5-2-3-4-5-2-Finish
XB3	Start-5-2-3-4-5-2-3-4-5-2-3-4-5-2-3-4-5-Finish		XT3	Start-2-3-4-5-2-3-4-5-2-3-4-5-2-Finish

FINISH



C18 TIME LIMITS AND TARGET TIMES

Time limits and target times are as follows:

Time Limit	Mark 1 Time Limit	Finish Window	Target Time
10	5	5	6

C19 SCORING

C.19.1 If at the end of the qualifying series some kiteboards have more race scores than others, scores for the most recent races will be excluded so that all kiteboards have the same number of race scores.

C19.2 A kiteboards series score will be the total of her race opening scores, excluding her worst score when 5 to 9 races are completed, her two worst scores when 10 to 14 races are completed, her three worst scores when 15 to 19 races are completed and her four worst scores when 20 and more races are completed, plus her non-discardable scores from the medal races series (if applicable).

C19.6 NoR/Sl 19.6 does not apply.

C19.7 In NoR/Sl 19.7, 19.8 and 19.9, change “medal race” to “medal race series”

C28 RRS CHANGES

C28.1 In Rules 29.1, 30.1, 30.2 and 30.3, change ‘crew or equipment’ to ‘or competitor’.

C28.2 Add new rule F 3.31, Touching a *mark*:

“While *racing*, a kiteboard shall not touch a windward *mark* or windward gate.

C28.3 Rule F4.44.1 is changed to read:

“A kiteboard may take a One-Turn Penalty when she may have broken rule F3.31, or one or more rules of Part 2 in an incident while *racing*. Sailing instructions may specify the use of some other penalty. However,

- (a) when a kiteboard may have broken a rule of Part 2 and rule F3.31 in the same incident she need not take the penalty for breaking rule F3.31;
- (b) if the kiteboard caused injury, serious damage or a tangle or, despite taking a penalty, gained a significant advantage in the race or series by her breach her penalty shall be to retire.

C28.4 Rule F4.44.2 is renamed to “One-Turn-Penalty and changed to read:

“After getting well clear of other kiteboards as soon after the incident as possible, a kiteboard takes a One-Turn Penalty by promptly making a turn with her hull in the water including one completed tack and one completed gybe. Forward motion shall be established between tack and gybe (or vice versa) with the sailor on the correct side of the hull in normal sailing position. When a kiteboard takes the penalty at or near the finishing line, she shall sail completely to the course side of the line before finishing

C28.5 In Rules 61.1(a)(4) and 62.1(b), change ‘damage’ to ‘ damage or a tangle’.

C28.6 At the end of Rule 62.1(b) add: “however, if prior to the incident, there is a clear risk of a situation that could cause an entanglement that a competitor could reasonably anticipate and avoid, and the competitor fails to do so, or if a competitor through his own actions creates a situation that carries a clear risk of entanglement, the competitor shall not be eligible for redress”

C28.7 Delete the last sentence of Rule F5.61.1 (a)

C28.8 Delete Rule F5.62.1 (e)

C28.9 Add new Rule 64.1(d):

“When a kiteboard breaks a rule of part 2 and, as a result, causes a tangle for which redress is given, she shall be scored RCT if she retired or DCT if she is disqualified, equalling a score of 0 points.

C28.10 For races of the medal race series rules 61.2 and 65.2 are deleted and rule 63.6 is changed to:

“63.6 Protests and requests for redress need not be in writing; they shall be made orally to a member of the protest committee as soon as reasonably possible following the heat. The protest committee may take evidence in any way it considers appropriate and may communicate its decision orally.”

C28.10 RRS F 8 A.8 is deleted.

Changes to the NoR/SI

14 January 2016

- NoR/SI 2.7.1 : Norling OD rules for 2.4mR
- NoR/SI 12.2: MKI Sails for Laser

21 March 2016

- Addendum M for the SWC Miami removed.
- NoR/SI 1:
 - New dates for the SWC Qingdao.
 - New dates and venue for the SWC Final.

15 June 2016

- NoR/SI 4.2:
 - Fees in Sterling.
 - For the SWC Final: Charter fee and damage deposit for the Laser and Laser Radial.
- NoR/SI 5.1: Third Party insurance (SWC Final)
- NoR/SI 14.2: Schedule (SWC Final)
- NoR/SI 14.3: Number of races (SWC Final).
- NoR/SI 16.4: Update of the Starting System for SWC Regattas.
- NoR/SI 21.2: Actions by official boats
- NoR/SI 22: Prize money

26 July 2016

- NoR/SI 4: New entry fee for 2.4mR
- NoR/SI 10.1: Personal flotation requirements for the SWC Final
- NoR/SI 12.2 deleted to allow MKII sails to be used in the Laser fleet.

5 October 2016

- NoR/SI 12.1: Day Zero for the SWC Final (Melbourne) starts at 12:00 on Monday 5 December.
- NoR/14.2: Change of registration time for the SWC Final (Melbourne).

XX November 2016

- NoR/SI 12: restrictions on the use of gennakers in the 49er fleet.
- New Addendum C for Kites.